

STATE OF ARIZONA S.S. COUNTY OF PINA S.S. THIS PLAN FILED FOR RECORD AT THE REG. OFFICE OF THE COUNTY RECORDER, PINA COUNTY, ARIZONA, THIS 15th DAY OF OCTOBER, 1978.

BY: Joseph E. Brennan DEPUTY

NOTES

THE ASSURANCES IN THE FORM OF TRUST NO. 1-1-111 SECURITY OF ACCESS RECORD IN BOOK 8500 HAVE BEEN PROVIDED TO GUARANTEE STREET IMPROVEMENTS, WATER SUPPLY, SEWERAGE IMPROVEMENTS AND FLOOD CONTROL (GAS, ELECTRIC, WATER) IN THIS SUBDIVISION.

BOARD OF SUPERVISORS CITY OF PINA

7/8

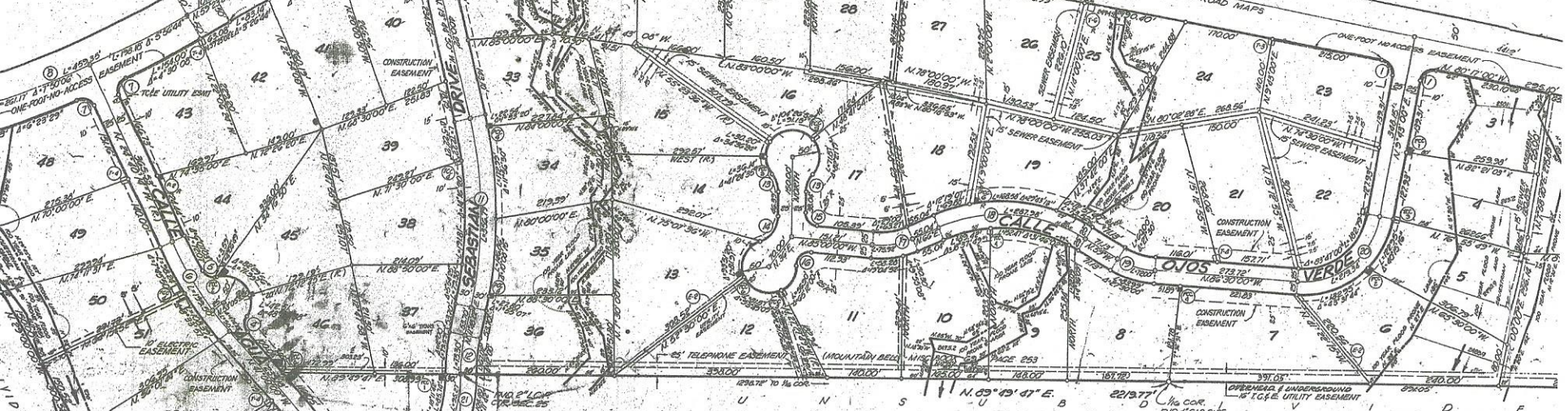


Table with columns for lot numbers and survey data.



LOCATION PLAN SECTION 12, T10S, R14E, C4S, R34M, PINA COUNTY, ARIZONA

NOTES

- 1. CROSS AREA - 627.9 ACRES... 2. THE BEARINGS... 3. TOTAL NEW PUBLIC ROADWAY MILEAGE - 0.85 MILE... 4. MINIMUM LOT SIZE - 36,000 SQUARE FEET... 5. INDICATES A 1/2" BENCH SURVEY MONUMENT TO BE SET IN CONCRETE AND STAMPED WITH THE ENGINEER'S REGISTRATION NUMBER, 8063.

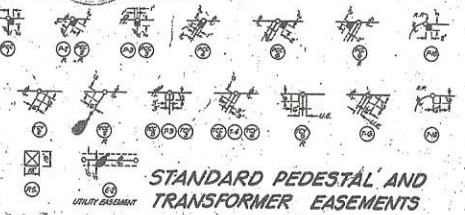
(NOTES CONTINUE)

- 20. A FLOOD FLOOD PERMIT WILL BE OBTAINED FOR LOTS 1 THRU 9, 10, 20, 24, 25, 26, 28 THRU 30, 34 THRU 36 AND 37 THRU 39 PRIOR TO THE ISSUANCE OF ANY PERMITS FROM THE ZONING INSPECTOR... 21. REPRESENTS WATER SURFACE ELEVATION OF RIVER/FLOOD FLOOR... 22. DEVELOPMENT OVER ADJACENT TO PORTIONS OF AREA DELINEATED ON THIS PLAN IS SUBJECT TO ARTICLE 14, THE UNIFORM DEVELOPMENT ZONING ORDINANCE...

APPROVALS: [Signatures and dates for various officials]

CERTIFICATION

I HEREBY CERTIFY THAT THE BOUNDARY SURVEY SHOWN ON THIS PLAN WAS PERFORMED UNDER MY DIRECTION AND THAT ALL EXISTING AND/OR PROPOSED SURVEY MONUMENTS AND MARKERS SHOWN ARE CORRECTLY DESCRIBED.



(DEDICATION) STATE OF ARIZONA S.S. COUNTY OF PINA S.S. ON THIS 15th DAY OF OCTOBER, 1978, BEFORE ME, NORMA WHELEN, THE UNDERSIGNED OFFICER, PERSONALLY APPEARED WILLIAM S. BOUGHTON...

DEDICATION

WE, THE UNDERSIGNED, HEREBY WARRANT THAT WE ARE ALL HAVING ANY RECORDED TITLE INTEREST IN THE LAND SHOWN HEREON TO BE SUBDIVIDED INTO LOTS 1 THRU 58...

WE, THE UNDERSIGNED, OUR SUCCESSORS AND ASSIGNS, DO BY THIS INSTRUMENT AND ASSURE THEMSELVES OFFICERS FROM ANY AND ALL CLAIMS FOR DAMAGES RELATED TO IT IN THE FUTURE BY REASON OF FLOODING, EROSION AND/OR WATER INTERFERENCES...

[Signatures and dates for dedicators]

STATE OF ARIZONA S.S. COUNTY OF PINA S.S. ON THIS 15th DAY OF OCTOBER, 1978, BEFORE ME, THE UNDERSIGNED OFFICER, PERSONALLY APPEARED WILLIAM S. BOUGHTON...

WATER ADEQUACY HAS BEEN PROVIDED IN COMPLIANCE WITH PINA COUNTY WATER ASSURANCE POLICY AND PURSuant TO P.S. 45-910...

RIO VERDE I LOTS 1 THRU 58 A PORTION OF THE NORTHEAST, SOUTH NORTHWEST ONE QUARTERS OF SECT. 14-E, C4S, R14E, M, PINA COUNTY, ARIZONA

Cella, Barr, Evans and Associates ENGINEERS AND PLANNERS 2075 NORTH SMITH AVENUE, TUCSON, ARIZONA 85715 APRIL 1978